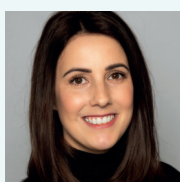


AUGUST 2020

NEWS AROUND



Well what an exceptional few months it has been. Hopefully this finds you all safe and well – possibly working at

your dining table rather than your usual desk though, and missing having a cappuccino and lunch cooked for you at Café @ No10.

The lockdown has been challenging for us all in every way and even now, there is a long road ahead to the 'new normal'. The online programme we put in place back in March has proved incredibly popular and we hope has helped many of you to stay focussed, fit and healthy while at home. Keeping the work-life balance when the lines are so blurred has definitely been on my mind.

Looking ahead, we have installed all the necessary safety measures at the park - in the common areas of buildings, in the café and the gym. You can find out more on the next page so that when you are ready to return, you can be confident that Arlington is a safe place to be with a variety of procedures and provisions in place.

If you have any specific questions about getting back to your workplace or the changes we've made, please do get in touch.

Amy Coles
Park and Operations Manager

07795 331900
Amy.coles@workmanfm.co.uk

THAMES VALLEY PROPERTY AWARDS

THAMES
VALLEY
PROPERTY
AWARDS 2020

Our award-winning park is on course to add to the trophy cabinet in September, having been shortlisted for 3 awards at the Thames Valley Property Awards 2020.

Park Manager, Amy Coles has been selected as a finalist in the **Young Property Person** category, while the park is shortlisted for **Business Park Innovation and Workplace of the Future**.

Judges consider a number of elements for the park categories:

- the contribution the park makes to the local economy
- the initiatives delivered to tenants
- the sustainability of the setting
- how Arlington Business Park will evolve in the future

Projects highlighted include Smart Spaces, the building control

innovation which gives businesses a cutting edge technology platform to manage climate control, energy consumption, access, and space usage. Building 1220 and 1330 benefit from Smart Space technology, making them the most tech-enabled buildings within the Thames Valley.

Amy's contribution to the park is very clear. 5 years ago, as Amy joined the park, the vision was to establish Arlington as a best in class workspace with premium facilities, calm surroundings and a trailblazing approach to work-life balance. Amy's commitment to delivering this on a day-to-day basis has been integral in bringing this to life, and the recognition as a finalist is really well deserved.

The postponed awards are due to take place in the Autumn so watch this space!

ARLINGTON BUSINESS PARK - NEW OWNERSHIP

At the end of February, CapitaLand acquired the freehold of Arlington Business Park from Patron Capital for £129.3 million.



Mr Jason Leow, President, Singapore & International, CapitaLand Group, said: "The acquisition of Arlington Business Park is part of

CapitaLand's plan to increase our investments in developed markets such as Europe, Japan and the USA. Our strengthened presence in Europe

will enable the Group to maintain a balanced portfolio between emerging and developed markets. Post integration with Ascendas-Singbridge, we have acquired strong expertise in business parks. We can leverage this deep experience and our strong network of tenants to value add to Arlington Business Park. As we build up our portfolio in Europe, we have greater optionality in spinning off such assets into investment vehicles or partnerships, continuing to deliver value for our stakeholders."



ARLINGTON SAFETY

Our tenant's safety is our top priority and we have been busy working behind the scenes to make sure that the necessary signage and social distancing measures are implemented throughout the park.

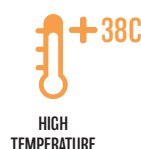


Hand sanitiser stations are located across the park at all entrances. Washroom etiquette is in place and a new 'Keep to the left' stairwell policy has been implemented. We have also introduced a one-way system within the café and appropriate distancing rules have been put into place in the gym.

A series of videos have been put together to outline what is expected of all visitors to the park to help aid everyone's safety. The videos can be seen on our facebook page.

As we go forward it's vital that we all remember to:

- Sanitise hands on entrance to buildings
- Socially distance safely
- Follow any one-way systems in place
- One person in the lifts at any time
- Keep to the left on stairwells
- Only one person allowed in the washroom facilities at any time
- Do not come to work if you have any of the symptoms shown here →



#ARLINGTONATHOME



1.



2.



3.

Since lockdown was announced on 23rd March, Arlington has been a very quiet place to be. Usually the spring and summer is jam-packed with activities – Outdoor Cinema nights, Human Table Football, Zorbing on the lake...

The programme moved online shortly after lockdown with plenty of activities to help keep the work-life balance:

1. A programme of virtual exercise classes from Lake Fitness
2. A series of worksheets and resources for homeschoolers
3. Ideas to recreate dishes at home with recipes provided by Olive/Café @ No10
4. The team at Café @ No 10 dropped food to Theale Help. Donating food to key workers at a local school which supports autistic children and their families.
5. A series of webinars to support mental health, wellbeing and the overwhelm from living in a new normal



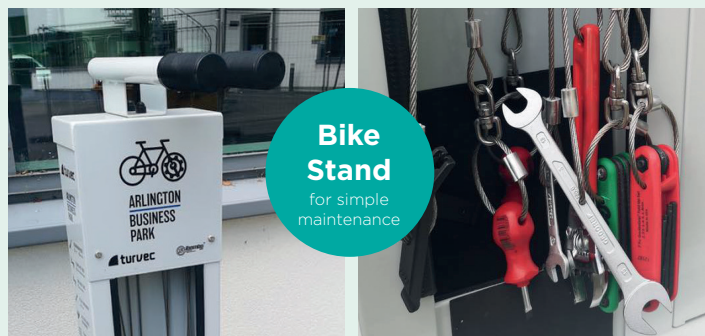
A SUSTAINABLE ENVIRONMENT

One of our aims for the park – and one of the reasons we have been short-listed for the Thames Valley Property Awards - is the sustainable environment which is constantly evolving at Arlington.

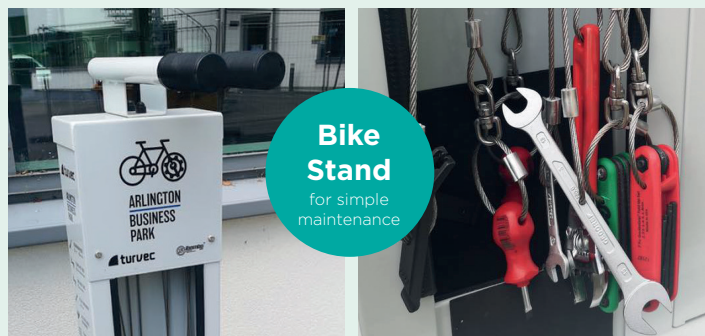
Did you know....?

- Water is provided in the café for refillable cups
- There is a dedicated station in the cafe to maximise recycling of coffee cups
- Discount is given to customers using their refillable cup for hot drinks
- A permanent bike stand has been installed for you to carry out simple maintenance
- Bikes are available to borrow during the day
- The park has wildlife boards, workshops and honey collection from the Arlington bees to help you learn more about your work environment
- Electric car charging points are provided and park security have transferred to an electric patrol vehicle.

The team at Arlington are committed to constantly improving the sustainability of the park and more initiatives are in the pipeline – watch this space!



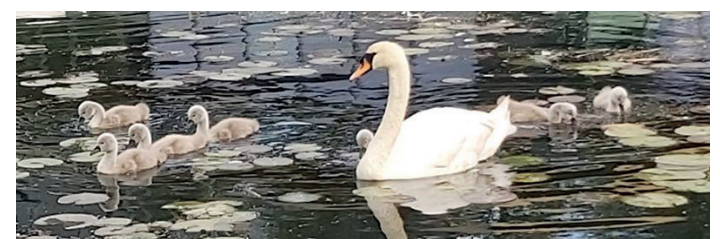
Use your **own cup** when buying a hot drink at Café @ No 10 and get **20p off**



NEW ARRIVALS

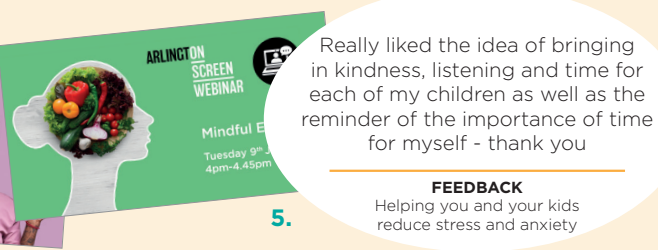
Back in April – the park was quiet and the swan was sitting in peace waiting for her eggs to hatch.

A few weeks later and the new arrivals looked very happy to be here ...What a beautiful place to work!



CAROLINE SMITH
Priors Court School

4.



FEEDBACK
Helping you and your kids reduce stress and anxiety

5.

AVAILABILITY

BUILDING	SQ FT	AVAILABILITY
1220	5,000 - 30,624	Available
1330	24,973 First Floor 12,550 Ground Floor 12,423	Available
1420	8,246	Available
1430	5,617	Available



Stuart Chambers

E: stuart.chambers@savills.com
T: +44 (0)20 7075 2883

Tom Mellows

E: tmellows@savills.com
T: +44 (0)20 7409 8694



Chris Barrs

E: chris.barrs@hollishockley.co.uk
T: +44 (0)1189 680 650

Jeremy Metcalfe

E: jeremy.metcalfe@hollishockley.co.uk
T: +44 (0)1189 680 650



Edward Smith

E: edward.smith@realestate.bnpparibas
T: +44 (0)20 7629 7282

Sarah Brisbane

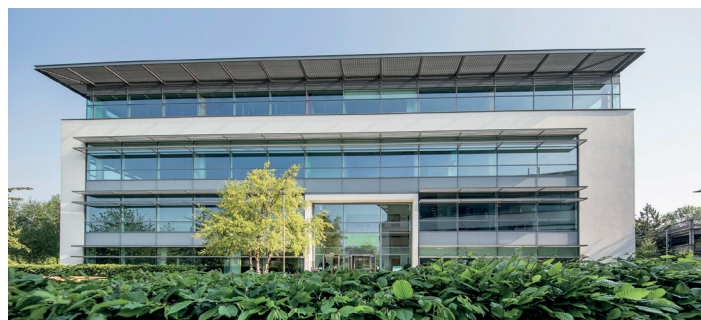
E: sarah.brisbane@realestate.bnpparibas
T: +44 (0)20 3978 0280



Building 1220



Building 1330



Building 1420

ARLINGTON SCREEN WEBINAR



DATES FOR YOUR DIARY

Our live webinars are open to businesses across the park including regular employees and HR staff.

To book on to any of our forthcoming events email: events@arlingtonbusinesspark.co.uk with the event name, your full name, your company and company building number.

Back to the Office - with HR Professional

Monday 3rd August @ 1pm-1.45pm

Breathe your way to calm

Thursday 6th August @ 1pm-1.45pm

KEEP IN TOUCH

Connect with us on social media and come and see what we are up to on LinkedIn.

Join our company pages to see the latest news of what's going on around the lake, upcoming events and news from Lake Fitness @ No 10 and Café @ No 10.

@arlingtonbusinesspark

@arlingtonbpbk

@ArlingtonBusinessPark

Arlington Business Park



If you no longer wish to receive this newsletter please email events@arlingtonbusinesspark.co.uk



APAM